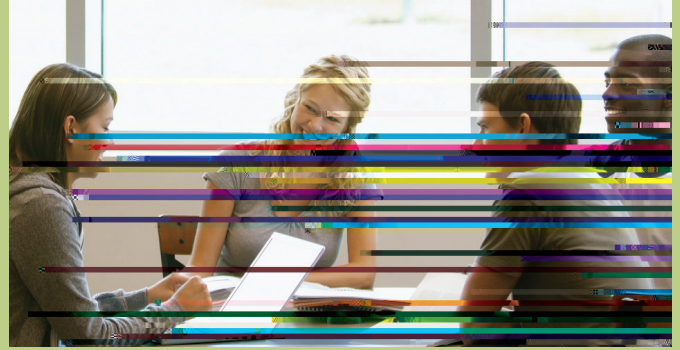


# HESI A A E a



Provides reading scenarios in order to measure reading comprehension, identifying the main idea, finding meaning of words in  
*Recommended time: 60 minutes*

Contains vocabulary terms that are commonly used in both general English-speaking settings and in health care fields.  
*Recommended time: 50 minutes*

*Recommended time: 50 minutes*

Focuses on math skills needed for health care fields, including basic addition, subtraction, multiplication, fractions, decimals,  
*Recommended time: 50 minutes*

*time: 25 minutes*

*Recommended*

*Recommended time: 25 minutes*

the Personality Profile assessment identifies the individual's dominant personality type, strengths, weaknesses, and

• • •

• •

•